

**MADDISON HOUSE**

5 John Carter Way  
 Unit 11 - 2113 Sq.Ft.  
 Includes 221 Sq.Ft.  
 Finished Basement  
 and main floor laundry

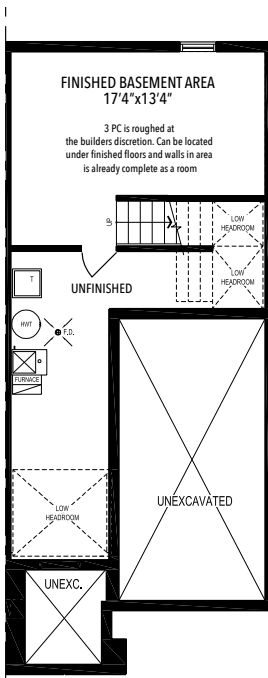
4 Bedroom  
 3 Full & 1,1/2 Bathrooms  
 Driveway. Backyard.



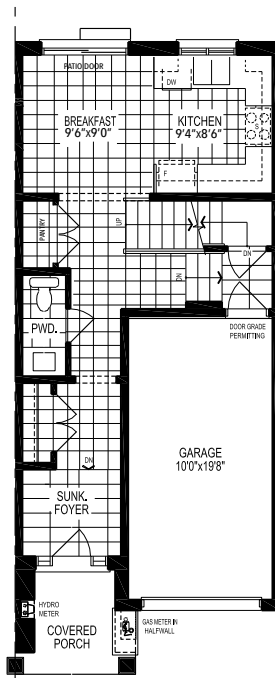
FRONT ELEV. "A"



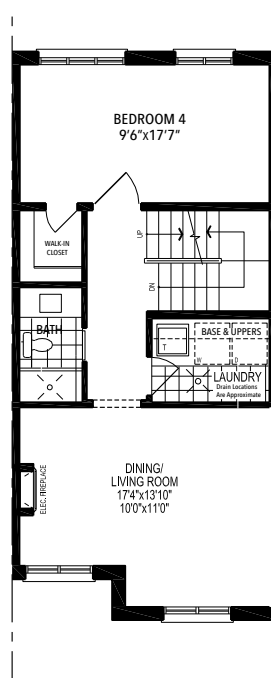
REAR ELEV. "A"



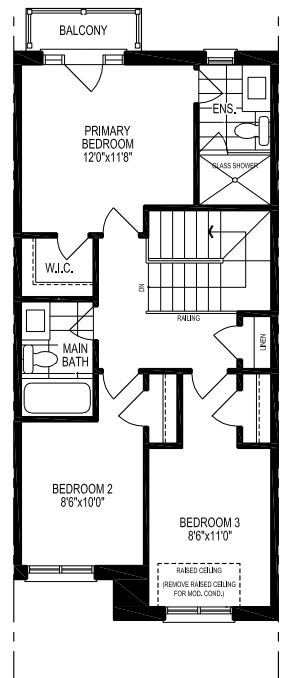
BASEMENT PLAN,  
 EL. '1802-A' & '1802-A-MOD'



GROUND FLOOR PLAN,  
 EL. '1802-A' & '1802-A-MOD'



MAIN FLOOR PLAN,  
 EL. '1802-A' & '1802-A-MOD'



THIRD FLOOR PLAN,  
 EL. '1802-A' & '1802-A-MOD'



The floor plans and elevations shown are pre-construction plans and may be revised or improved as necessitated by architectural controls and the construction process. The measurements adhere to the rules and regulations of the TARIION Warranty Corporation's official method for the calculation of floor area. Actual usable floor space may vary from the stated floor area. Railings on front porch only where required by O.B.C. All images are artist concept only. E. & O. E.